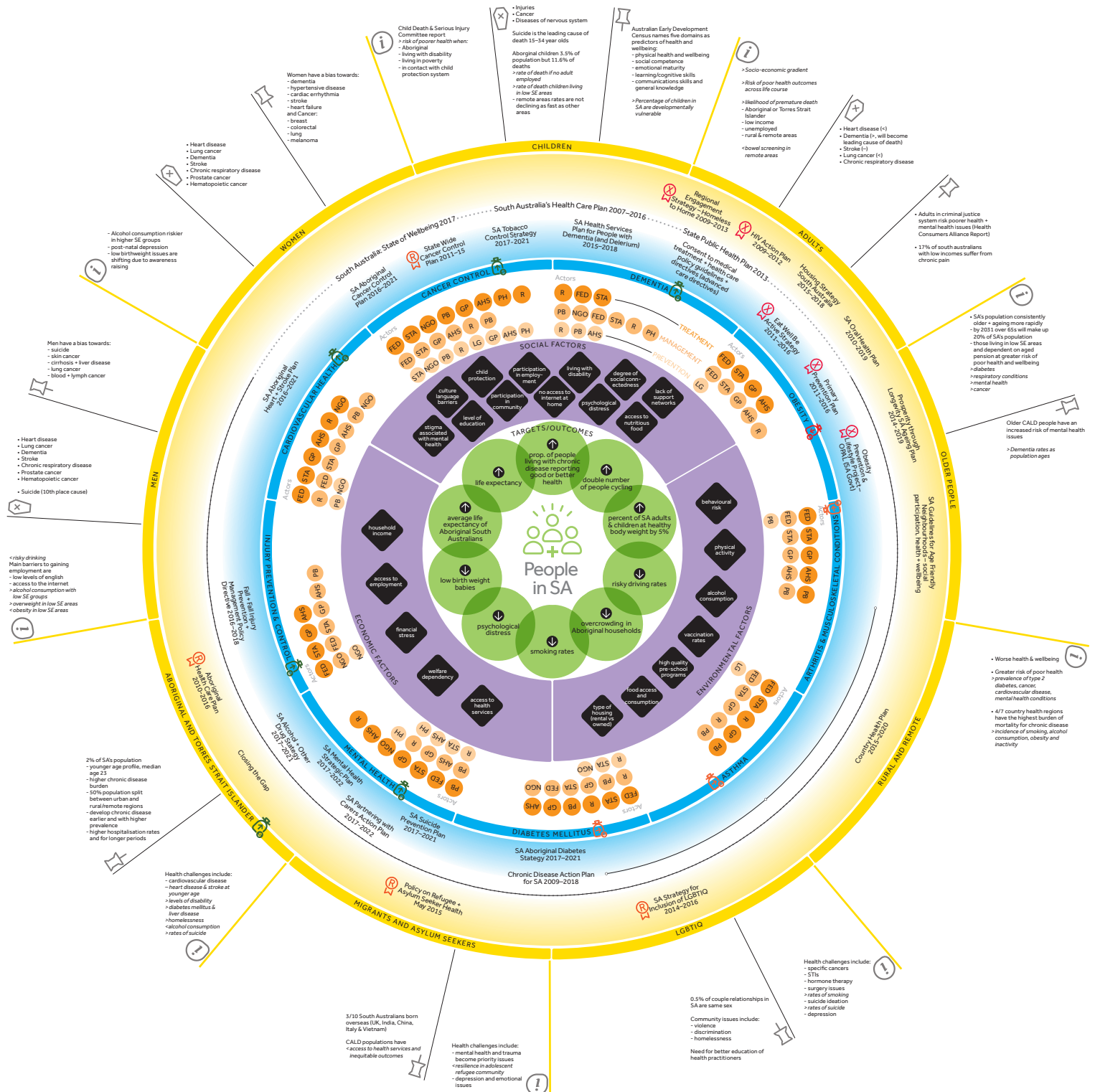


Mapping the health system in South Australia

Purpose

This map captures the main components of the health system in South Australia.

It has been designed as a tool to assist with understanding and further probing the system. For example: visualising interdependencies between different elements, identifying gaps, overlaps and opportunities for change. It is our hope it will contribute to greater collaboration around the shared mission 'To create better health outcomes for all South Australians'.



Key

- Population information
- Leading causes of death
- Worth noting
- Funding increase
- Funding decrease
- Funding stable

- Populations
- Policy/Plans x Population
- Overarching Policy/Plans
- Policy/Plans x Health Priority
- Expired policy
- Policy under review
- SAs Nine Health Priorities

- Treatment layer actors
- Management layer actors
- Prevention layer actors
- Risk and Protective Factors
- Target Outcomes

Commissioned by



This systems map has been compiled by The Australian Centre for Social Innovation (TACSI), based on the information gathered by the South Australian Health and Medical Research Institute (SAHMRI) and TACSI during their joint project, South Australian Health Needs and Priorities 2017-18, commissioned by Fay Fuller Foundation.

Current at February 2018